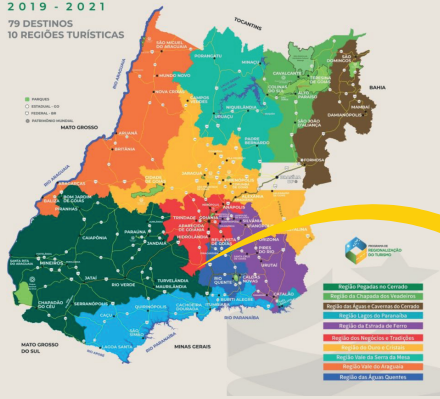


# Tourist Regions Indicators Panel

## (Pegadas no Cerrado Region)

MAPA DO TURISMO  
GOIÁS  
2019 - 2021  
79 DESTINOS  
10 REGIÕES TURÍSTICAS

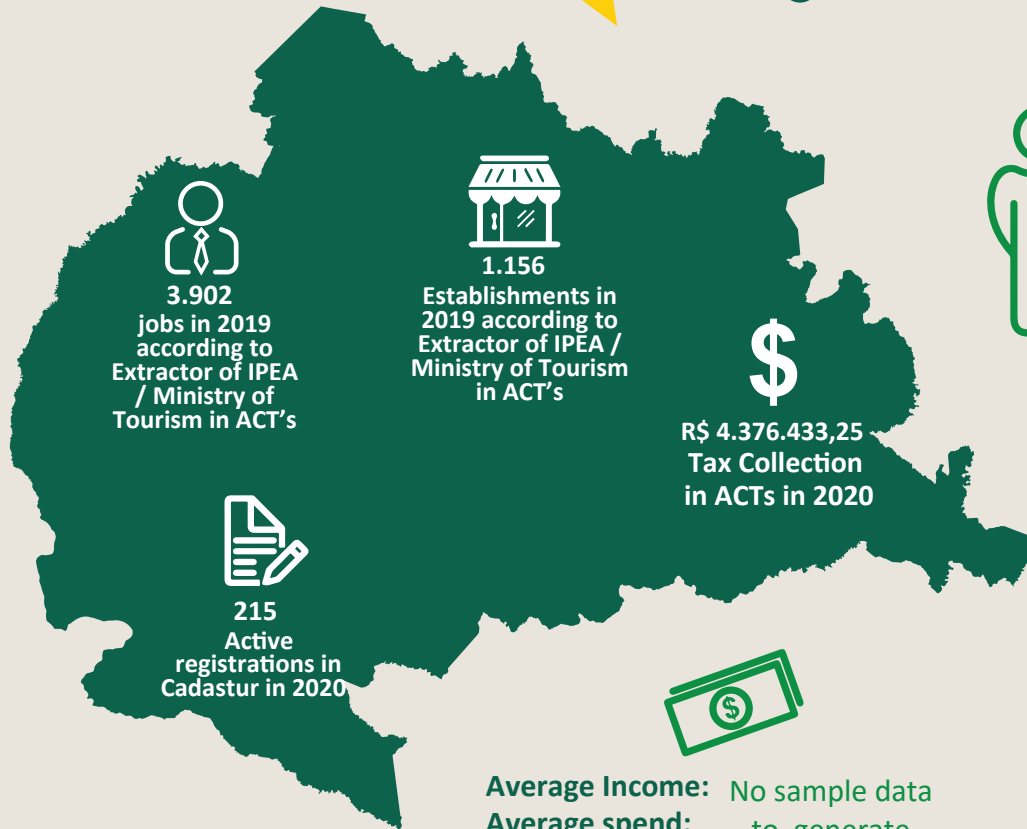


### Establishments

- Food: 774
- Accommodation: 138
- Ground transportation: 119
- Travel Agency: 35
- Culture and Leisure: 57
- Transportation Rental: 31
- Waterway transportation: 0
- Air Transport: 2

### Jobs

- Food: 2.525
- Accommodation: 804
- Ground transportation: 426
- Travel Agency: 63
- Culture and Leisure: 36
- Transportation Rental: 37
- Waterway transportation: 0
- Air Transport: 11



**Average Age**

No sample data to generate this information

### Indicators



Average Income: No sample data to generate this information  
 Average spend: No sample data to generate this information  
 Average Stay: No sample data to generate this information

Average percentage of major issuers (State / City):  
 No sample data to generate this information

Surveys conducted in the Tourist Region Pegadas in the Cerrado: Inventariação da Oferta Turística de Serranópolis 2012, Inventariação da Oferta Turística de Chapadão do Céu 2012, Inventariação da Oferta Turística de Piranhas 2013, Inventariação da Oferta Turística de Mineiros 2013, Inventariação da Oferta Turística de Caiapônia 2019, Inventariação da Oferta Turística de Santa Rita do Araguaia 2020 e Inventariação da Oferta Turística de Paraúna 2020.

Obs. The evaluation grades vary between 1 and 5, being: (1) Poor, (2) Bad, (3) Reasonable, (4) Good and (5) Great