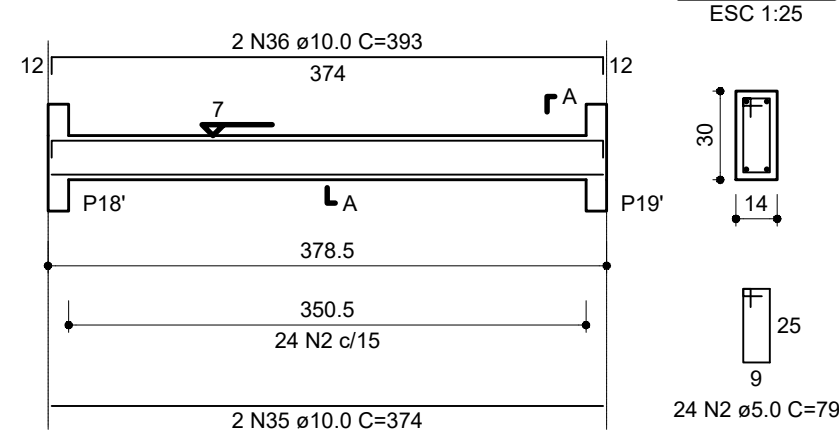
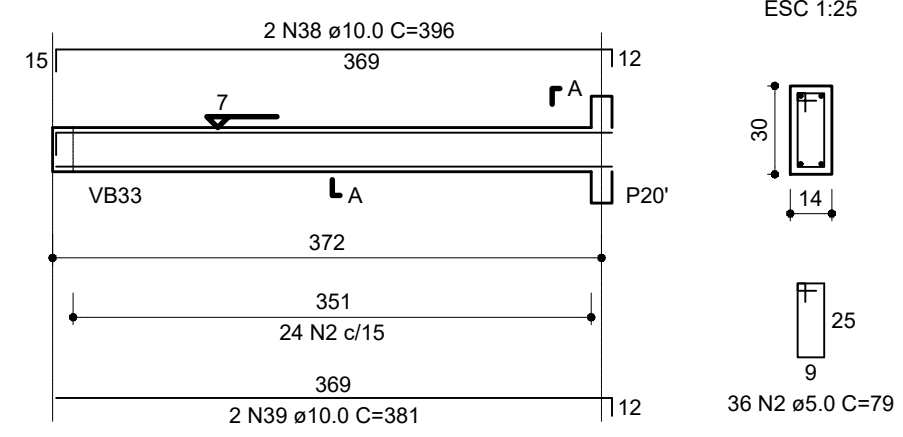


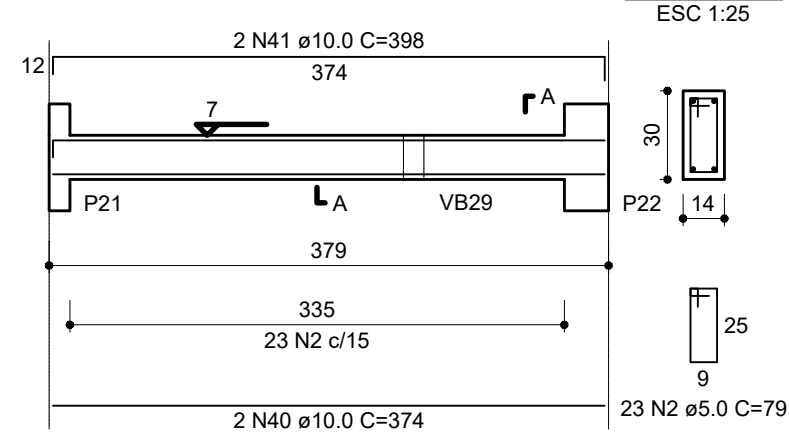
VB13 (14 x 30)
ESC 1:50



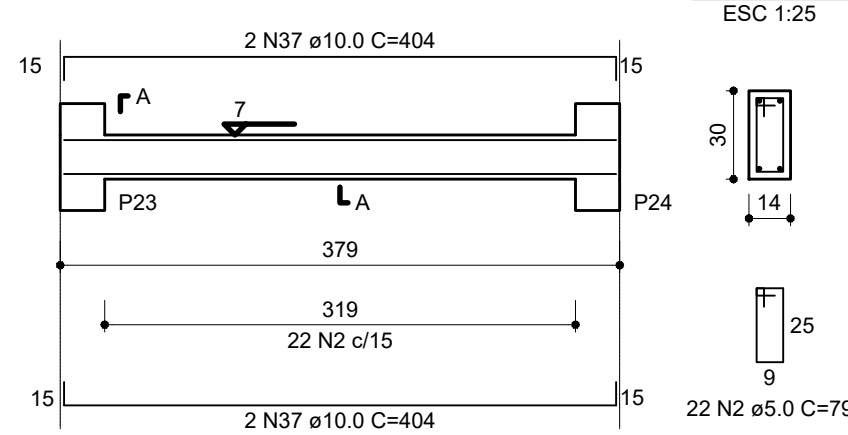
VB14 (14 x 30)
ESC 1:50



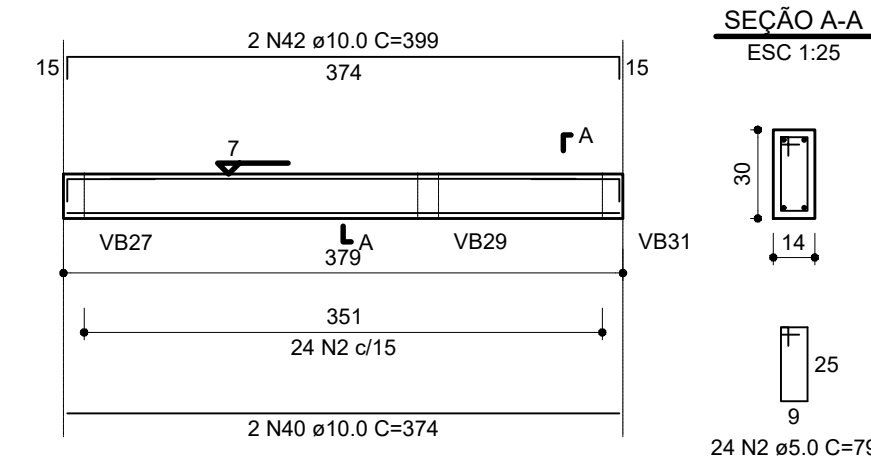
VB16 (14 x 30)
ESC 1:50



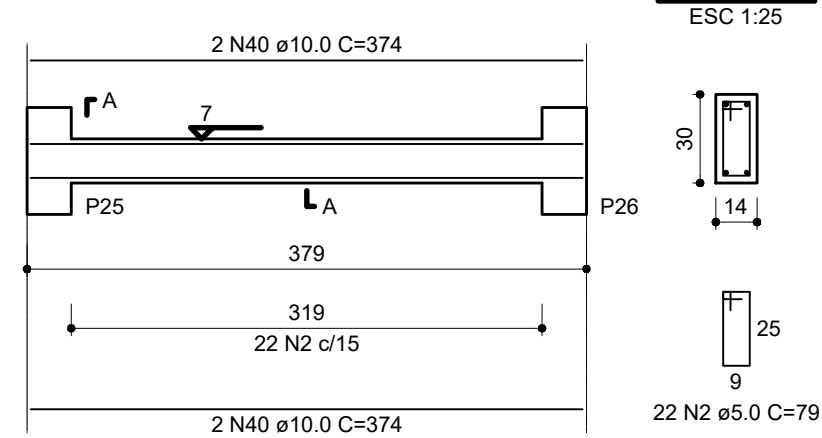
VB17 (14 x 30)
ESC 1:50



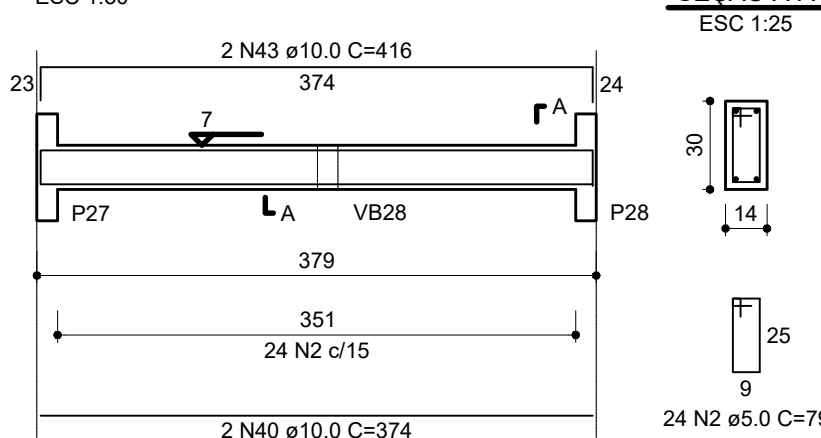
VB18 (14 x 30)
ESC 1:50



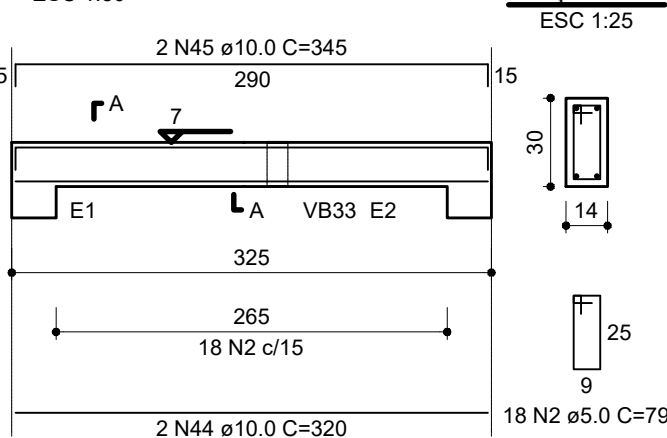
VB19 (14 x 30)
ESC 1:50



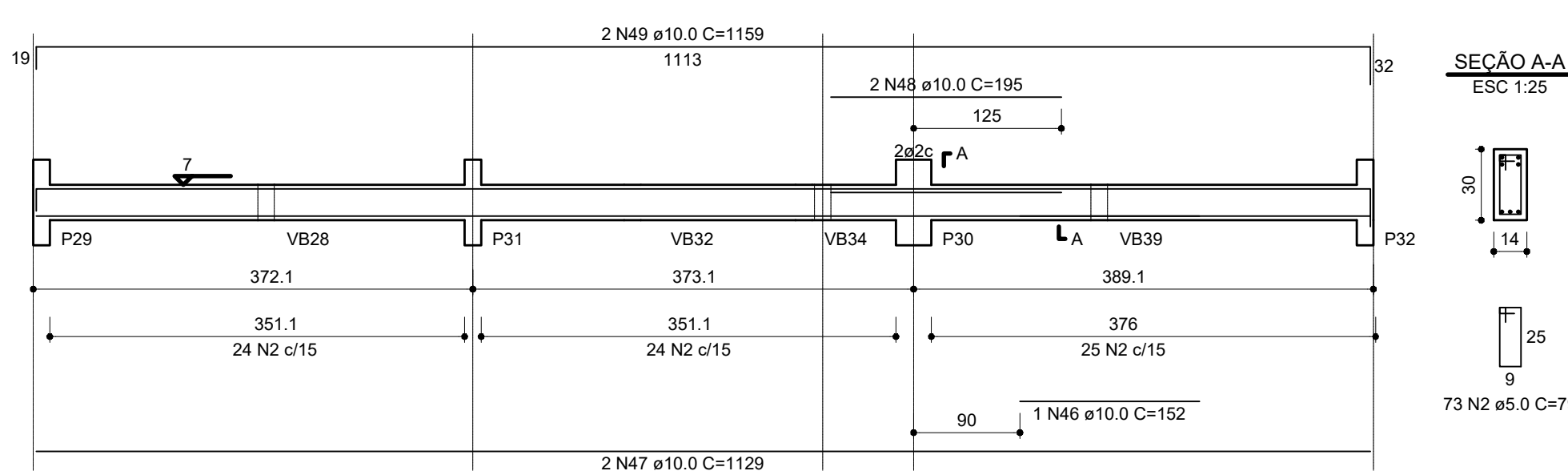
VB20 (14 x 30)
ESC 1:50



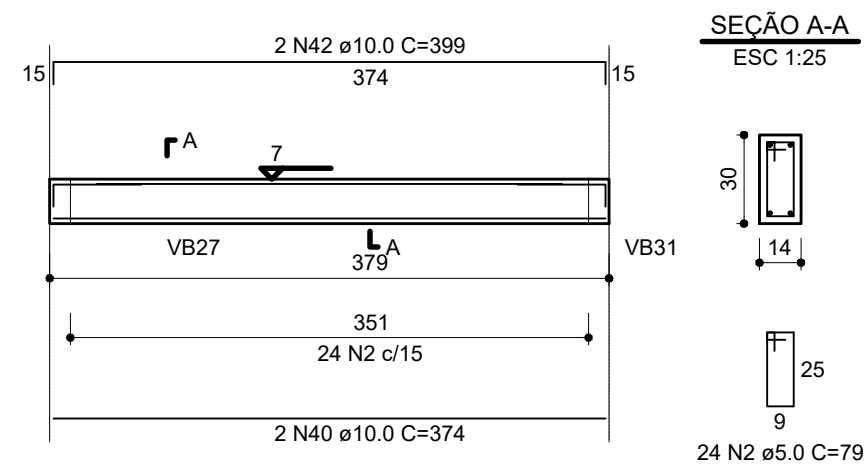
VB21 (14 x 30)
ESC 1:50



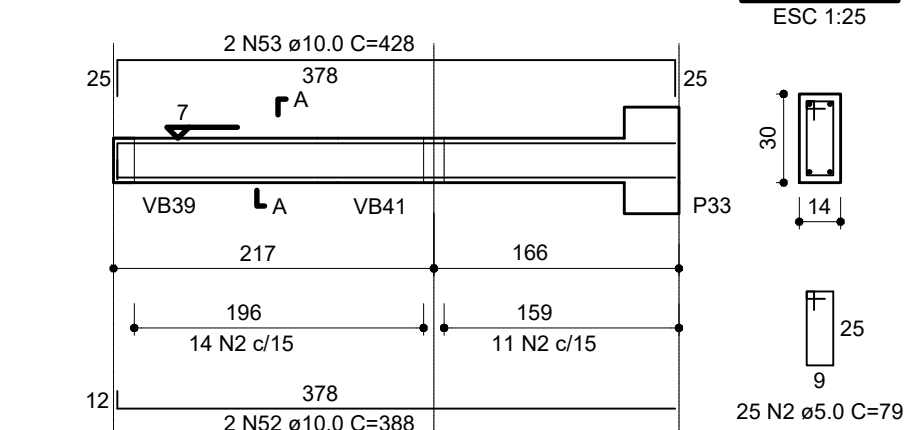
VB22 (14 x 30)
ESC 1:50



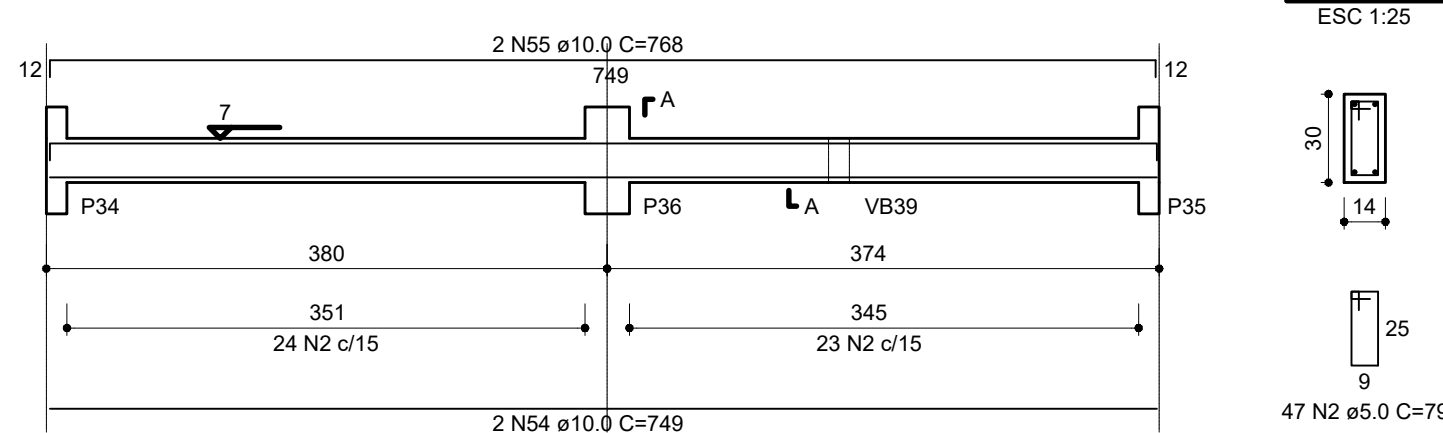
VB16' (14 x 30)
ESC 1:50



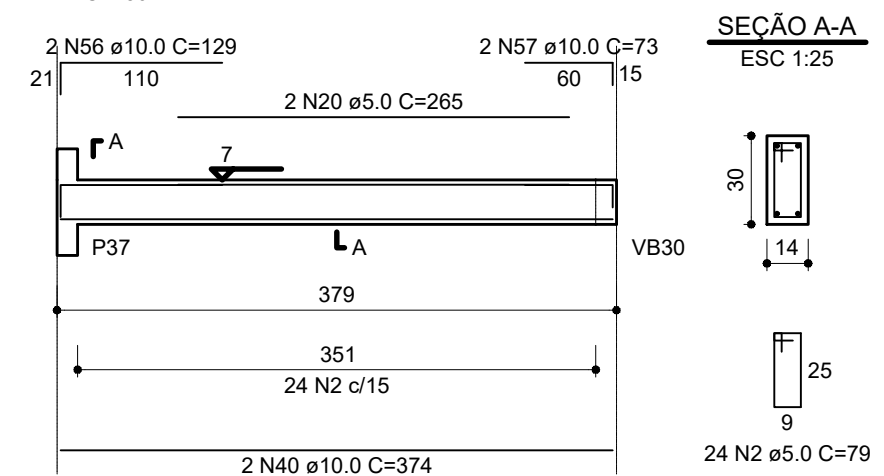
VB24 (14 x 30)
ESC 1:50



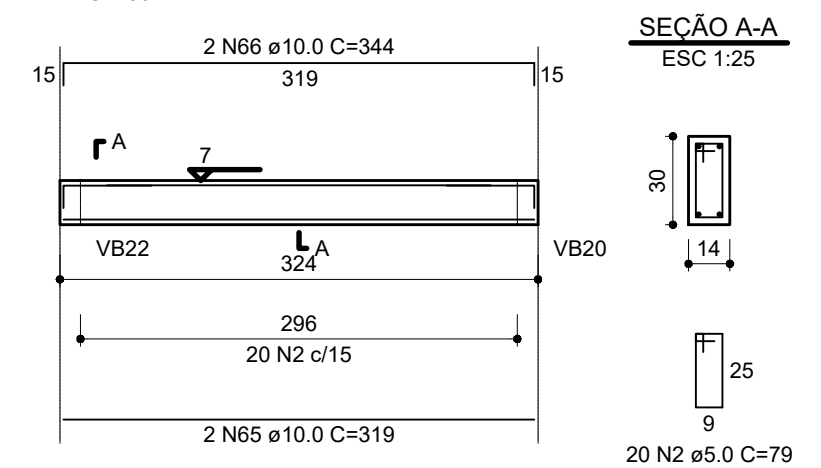
VB25 (14 x 30)
ESC 1:50



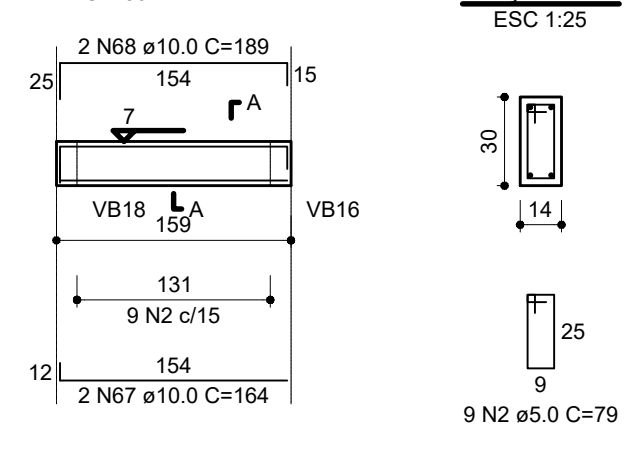
VB26 (14 x 30)
ESC 1:50



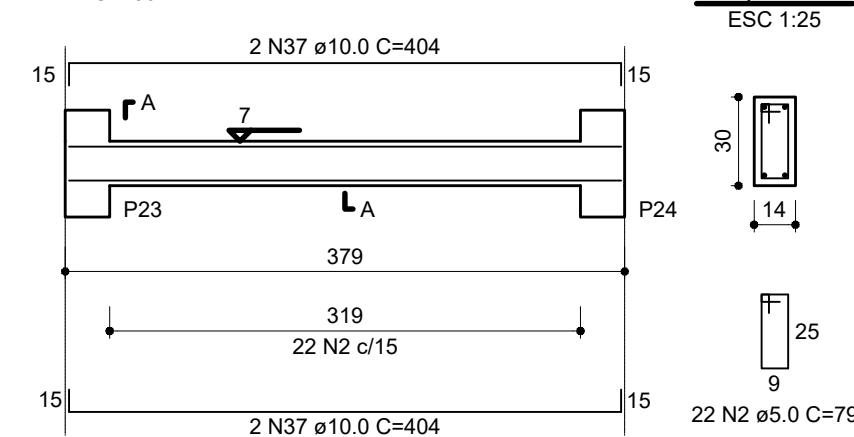
VB28 (14 x 30)
ESC 1:50



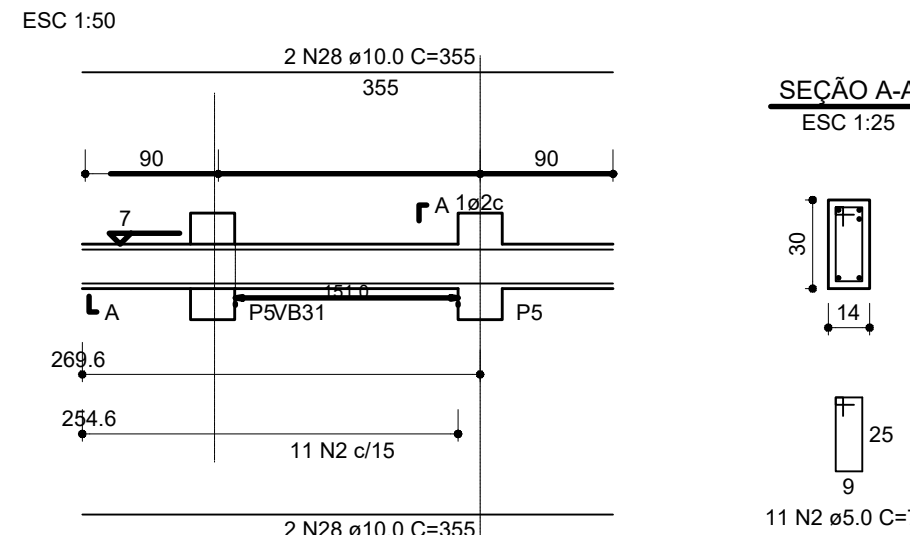
VB29 (14 x 30)
ESC 1:50



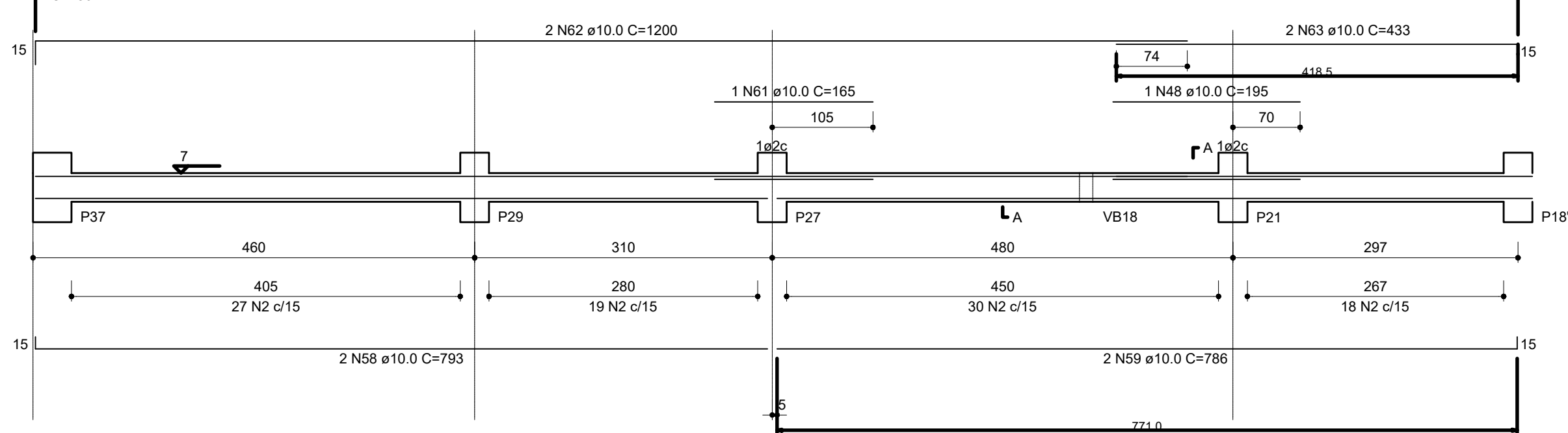
VB17' (14 x 30)
ESC 1:50



VB13' (14 x 30)
ESC 1:50



VB27 (14 x 30)
ESC 1:50



VB16	VB13	VB14 (AJUSTADA)
VB19	VB17	VB18
VB22	VB20	VB21
VB25	VB23	VB24
VB28	VB26	VB27 (AJUSTADA)
	VB29	

AÇO	N	DIAM (mm)	QUANT (Barras)	UNIT (cm)	C.TOTAL (cm)
CA60	2	5.0	530	79	41870
	20	5.0	2	265	530
					42400
CA50	28	10.0	4	355	1420
	35	10.0	2	374	748
	36	10.0	2	393	786
	37	10.0	8	404	3232
	38	10.0	2	396	792
	39	10.0	2	381	762
	40	10.0	14	374	5236
	41	10.0	2	384	796
	42	10.0	4	389	1556
	43	10.0	2	416	832
	44	10.0	2	320	640
	45	10.0	2	345	690
	46	10.0	1	152	152
	47	10.0	2	1129	2258
	48	10.0	3	195	585
	49	10.0	2	1159	2318
	52	10.0	2	388	776
	53	10.0	2	428	856
	54	10.0	2	749	1498
	55	10.0	2	768	1536
	56	10.0	2	129	258
	57	10.0	2	73	146
	58	10.0	2	793	1586
	59	10.0	2	786	1572
	61	10.0	1	165	165
	62	10.0	2	1200	2400
	63	10.0	2	433	866
	65	10.0	2	319	638
	66	10.0	2	344	688
	67	10.0	2	164	328
	68	10.0	2	189	378
					36534

RESUMO DO AÇO

AÇO	DIAM (mm)	C.TOTAL (m)	PESO+10% (kg)
CA50	10.0	365.34	247.84
CA60	5.0	424.00	66.81
PESO TOTAL (kg)			
CA50		247.84	
CA60		66.81	

(C-25) = 3,65 m³
Área de forma = 51,58 m²

APROVAÇÃO:

PROCESSO N.º
PREFEITURA DE MINEIROS
SECRETARIA MUNICIPAL DE DESENVOLVIMENTO URBANO SUSTENTAVEL-SEPLAN
DIRETORIA DE ANÁLISE E APROVAÇÃO DE PROJETOS
APROVADO
EM
.....

ESTRUTURAL E FUNDAÇÃO DELEGACIA DE MINEIROS

Endereço: Rua Sebastiana Maris de Sousa, Qd. 05, Lt 19 e 20, - Morada do Sol - Mineiros - GO
COORDENADAS GEOGRÁFICAS: 17°32'20.1"S 52°32'12.0"W

EDIFICAÇÃO INSTITUCIONAL
TÉRREO

Proprietário: POLICIA CIVIL - GO - CNPJ 37014 123 0001 - 91

Autor do Projeto: ENG. CIVIL - Fernando Lesse de Mattos CREA 24526-D/GO
Nº ART 1020200086470

Co-Autor do Projeto:

Responsável Técnico:

	DESCRIÇÃO DOS PAVIMENTOS:		
	TÉRREO		
	CONTEÚDO: DETALHE VIGAS BALDRAME	ÁREA DO TERRENO ORIGINAL: 602,31m²	FOLHA: 4/8
		ÁREA TOTAL DA CONSTRUÇÃO 178,75m²	
	ÁREA PAVIMENTADA: 134,06m²		
	RESERVA DE DEPENDÊNCIA LEGAL PAVIMENTO: 7,14m²	DATA: MAIO / 2020	
	Área Permeável: 294,43m²	DESENHO: GUSTAVO BARBOSA	
	ARQUIVO: EST_DP_MINEIROS_R01		