

AGRI IN DATA

FEBRUARY 2020



SEAPA
Secretaria de
Estado de
Agricultura,
Pecuária e
Abastecimento



AGRI IN DATA is a Government of Goiás publication, provided by the Secretariat of Agriculture, Livestock and Supply of Goiás State (Seapa). The data collection and editing are under the responsibility of the Market Intelligence Management of the Superintendence of Sustainable Rural Production, while the Communication Department is in charge of the graphic design, diagramming and reviewing. The photos in this edition are by the Brazilian Confederation of Agriculture and Livestock (CNA) and Brazilian Agricultural Research Corporation (Embrapa).

GOVERNMENT OF GOIÁS

■ GOIÁS STATE GOVERNOR

Ronaldo Caiado

■ DEPUTY STATE GOVERNOR

Lincoln Tejota

■ STATE SECRETARY OF AGRICULTURE, LIVESTOCK AND SUPPLY

Antônio Carlos de Souza Lima Neto

■ SUPERINTENDENT OF SUSTAINABLE RURAL PRODUCTION

Donalvam Maia

■ MARKET INTELLIGENCE MANAGER

Juliana Dias Lopes

INSTITUTIONS UNDER THE JURISDICTION OF SEAPA

■ PRESIDENT OF AGRODEFESA

José Essado Neto

■ PRESIDENT OF CEASA

Vanuza Valadares

■ PRESIDENT OF EMATER

Pedro Leonardo de Paula Rezende

State Secretariat of Agriculture, Livestock and Supply in Goiás

256 Street, n.52, Setor Leste Universitário, Goiânia (GO)

Zip Code: 74.610-200

Telephone Number: +55 (62) 3201-8935

www.agricultura.go.gov.br

📍 SEAPAGOIAS

📘 SEAPAGOIAS

🐦 @GOIASSEAPA

📺 SECRETARIA DE AGRICULTURA DE GOIÁS

PRESENTATION

In January, we were with Governor Ronaldo Caiado in Jataí City, during the National Opening of the Soybean Harvest 2019/2020. Leaders of the rural sector from all sides of the country had been at that event with us. The numbers reveal the importance of this sector, which is expected to have a 5.4% production growth, representing almost 50% of the total grain crop in Goiás.

In this Agri in Data Bulletin, we present the statistics for the 4th Survey of the 2019/2020 Grain Crop, in which Goiás continues as the fourth largest grain producer in the country, estimating an amount of more than 24 million tons, reaching 9.9% of the national production.

Regarding the international trade, agribusiness in Goiás represents more than 76% of the total exports and the agriculture is the main economic activity in 77 municipalities of the state. It means that the sector accounts for almost R\$20 billion of the Gross Domestic Product (GDP) in the state.

Besides, it is possible to observe real prices of some products, information on Gross Value Production (GVP) and trade, as well as the data about the institutions under our jurisdiction - Emater, Ceasa and Agrodefesa.

Hopefully, the information in this edition will serve to guide decisions on making investments in this sector.

Enjoy your reading!



ANTÔNIO CARLOS DE SOUZA LIMA NETO

STATE SECRETARY OF AGRICULTURE, LIVESTOCK AND SUPPLY IN GOIÁS

GOIÁS

GDP: R\$ 191,898,690,000.00

Agriculture: R\$ 19,423,015,000.00

Industry: R\$ 37,069,139,000.00

Services: R\$ 86,072,933,000.00

Public Administration: R\$ 28,686,494,000.00

MUNICIPALITIES IN GOIÁS: MAIN ACTIVITY OF THE LOCAL ECONOMY

LEGEND

 MESOREGIONS

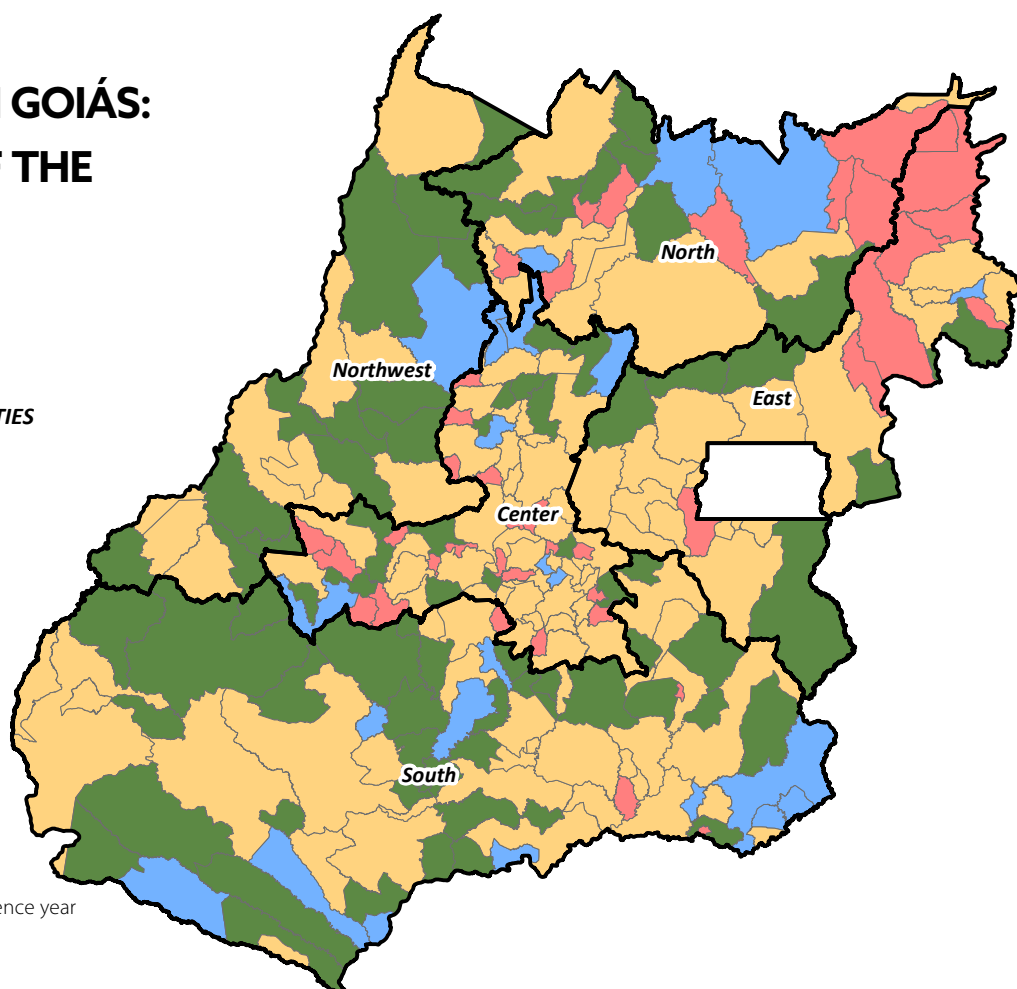
MAIN ACTIVITY / No OF MUNICIPALITIES

 AGRICULTURE / 77

 INDUSTRY / 23

 PUBLIC ADMINISTRATION / 41

 SERVICES / 105



Source: IBGE, Contas Regionais, GDP reference year 2017, released on December 13, 2019. Accessed on January 24, 2020.

GOIÁS

Top agricultural producing municipalities:

RIO VERDE | JATAÍ | CRISTALINA

■ Agriculture is the most important activity in the local economy in **31.3%** of the municipalities in Goiás

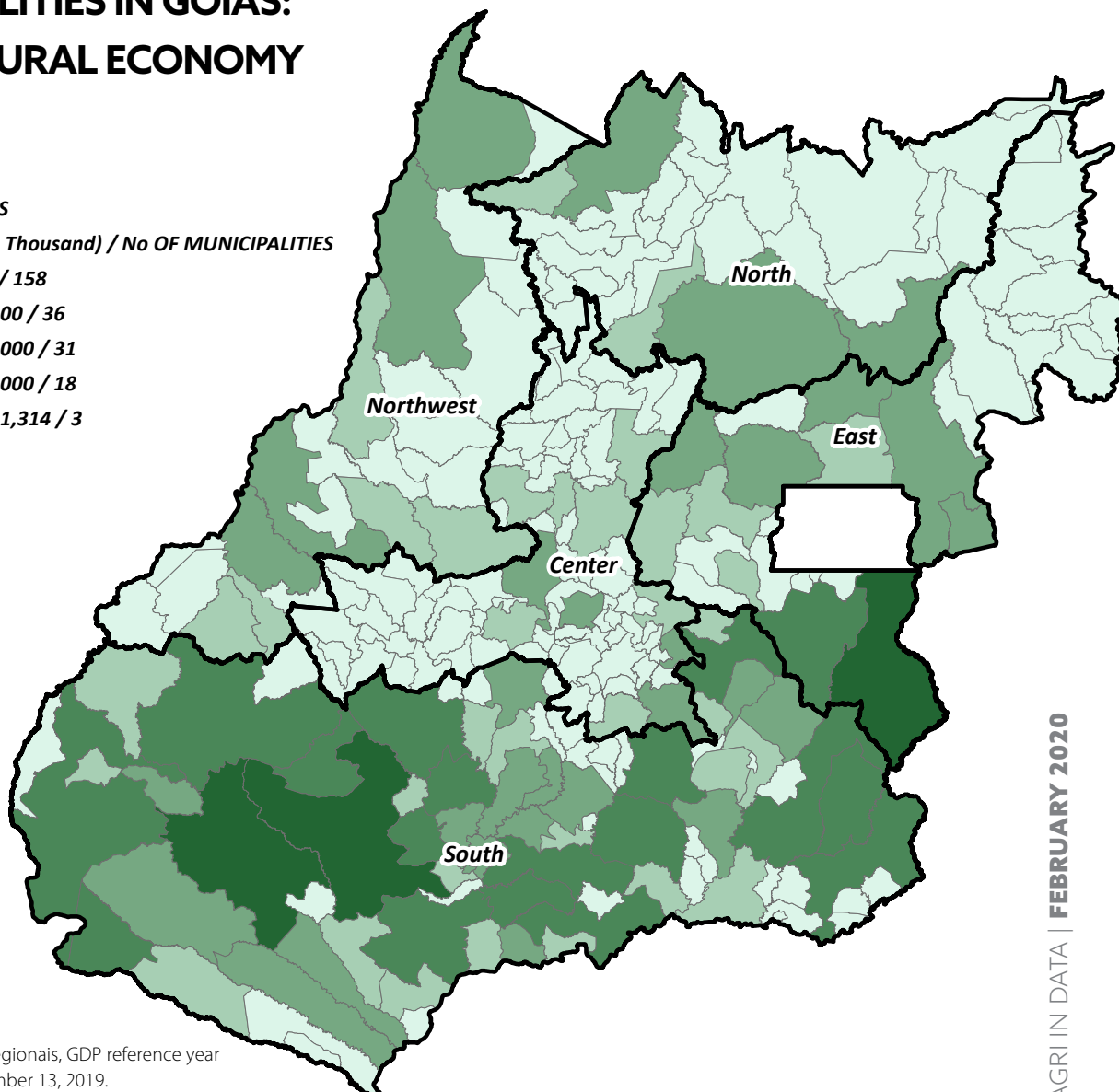
MUNICIPALITIES IN GOIÁS: AGRICULTURAL ECONOMY

LEGEND

□ MESOREGIONS

YTD AGRO 2017 (R\$ Thousand) / No OF MUNICIPALITIES

- UNTIL 50,000 / 158
- 50,001 - 100,000 / 36
- 100,001 - 200,000 / 31
- 200,001 - 500,000 / 18
- 500,001 - 1,361,314 / 3

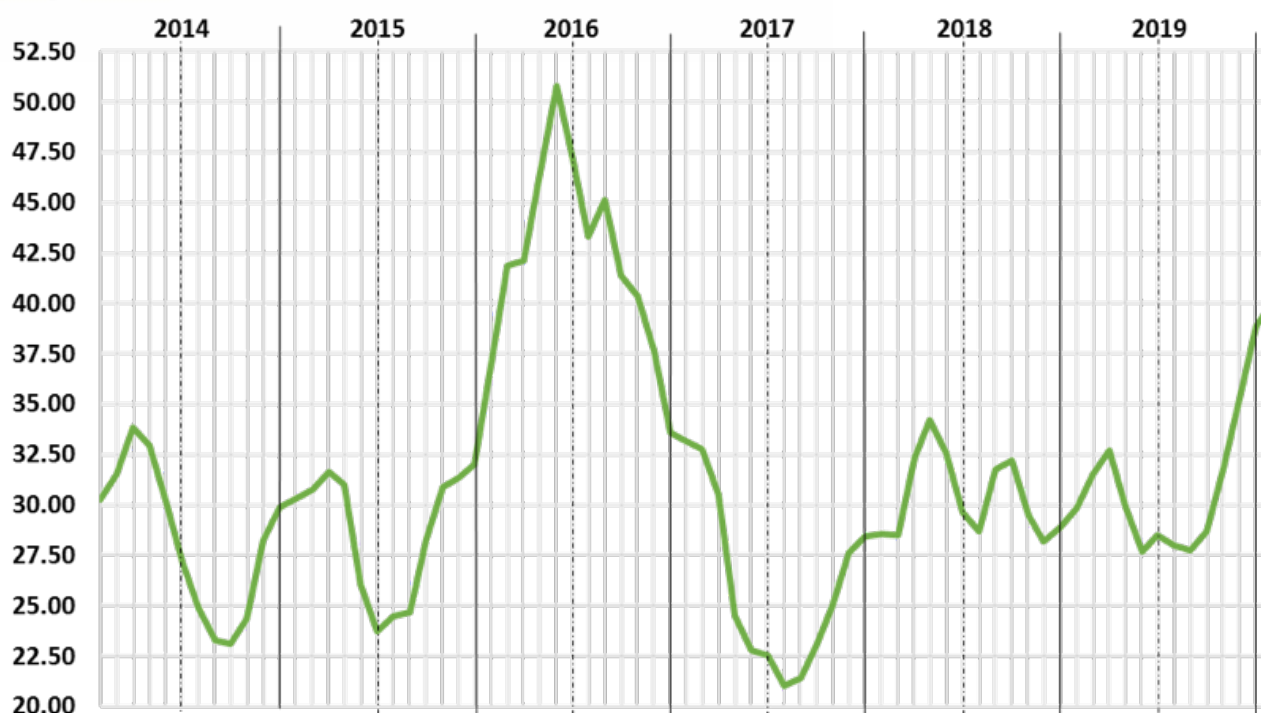


Source: IBGE, Contas Regionais, GDP reference year 2017, released on December 13, 2019. Accessed on January 24, 2020.

GOIÁS

CORN

REAL PRICE OF CORN (R\$/60 kg bag) - GOIÁS



Source: Conab/ FGV (IGP-DI).

AVERAGE PRICE (R\$/60kg bag)

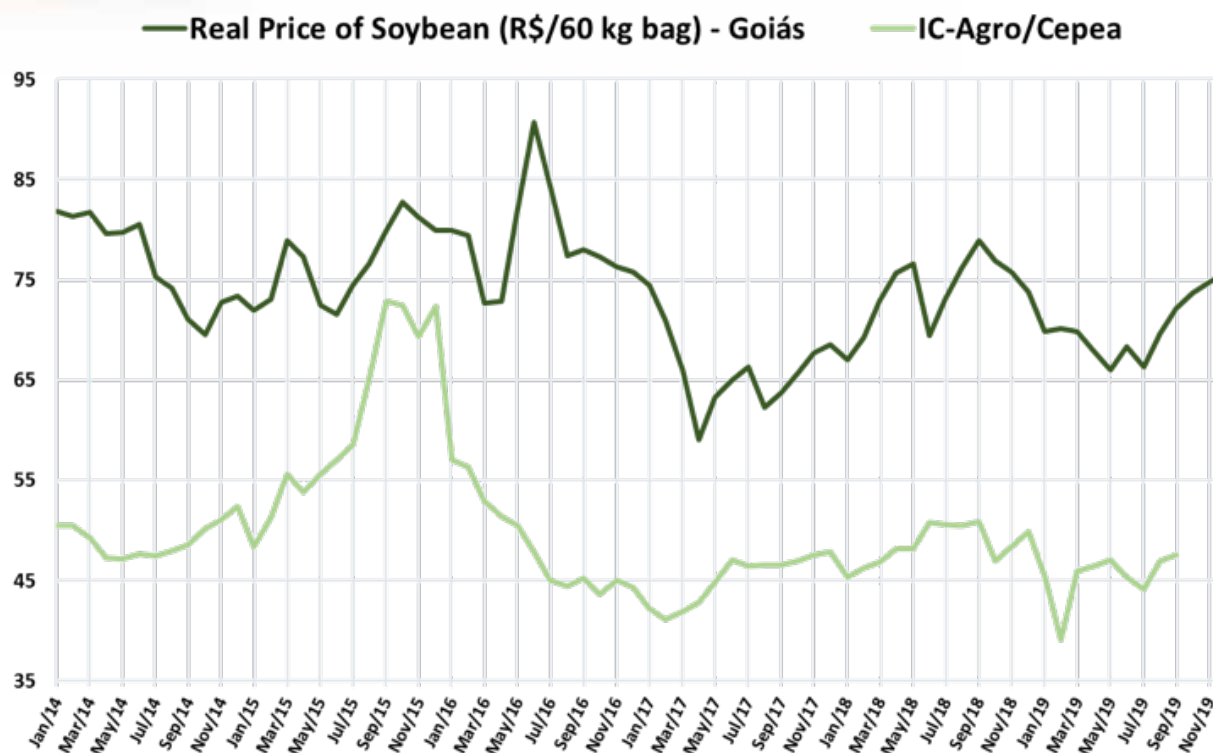
TRADING LEVEL: FARMER IN GOIÁS

Average December 2019	January 2020		
	January 6 to 10	January 13 to 17	January 20 to 24
38.83	43.03	42.97	42.81

Source: Conab.
Accessed on January 27, 2020.

GOIÁS SOYBEANS

REAL PRICE OF SOYBEAN



Source: Conab/ Cepea/Esalq/ FGV (IGP-DI).

■ **IC-Agro:** Agribusiness Real Effective Exchange Rate, calculated by Cepea -Esalq. It is appropriate to analyze the exchange rate over time, in which inflation in Brazil and in the main trading partners is considered.

AVERAGE PRICE (R\$/60kg bag)

TRADING LEVEL: FARMER IN GOIÁS

Average December 2019	January 2020		
	January 6 to 10	January 13 to 17	January 20 to 24
75.70	74.63	74.75	74.61

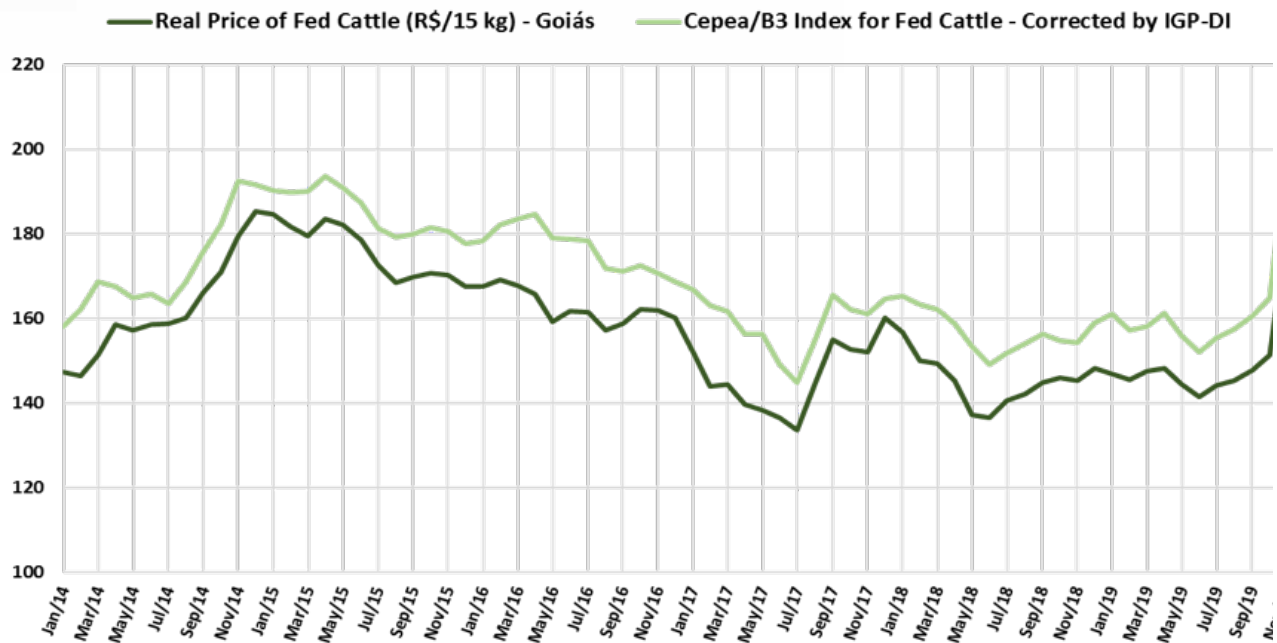
Source: Conab.
Accessed on January 27, 2020.



GOIÁS

FED CATTLE

CATTLE PRICE (R\$/15kg)



Source: Conab/Cepea/Esalq/FGV (IGP-DI).

Cepea / B3 Index for Fed Cattle is a weighted average price of fed cattle in trading venues in the State of São Paulo. It is used by the Brazilian Stock Exchange B3 in the financial settlement of fed cattle contracts traded on the future market and it is appropriate to analyze its degree of convergence with the average price of fed cattle traded in Goiás.

AVERAGE PRICE (R\$/15kg)

TRADING LEVEL: FARMER IN GOIÁS

Average December 2019	January 2020		
	January 6 to 10	January 13 to 17	January 20 to 24
188.27	182.00	182.50	181.33

Source: Conab.
Accessed on January 27, 2020.


GROSS VALUE OF AGRICULTURE PRODUCTION 2019

GOIÁS

**TOTAL
GVP** R\$ 50,547,587,613.97  4.1%*

■ Goiás accounts for **8.0%** of the national GVP

LIVESTOCK

GVP: R\$ 17,784,126,110.30  7.4%*


HIGHLIGHTS:

EGGS R\$ 865,116,852.92  41.1%*

BROILER R\$ 4,510,605,230.20  18.6%*

PIG R\$ 724,789,226.98  12.4%*

MILK R\$ 3,570,079,261.73  4.4%*

CATTLE R\$ 8,113,535,538.47  0.5%*

CROP PRODUCTION


GVP: R\$ 32,763,461,503.66  2.4%*


HIGHLIGHTS:

POTATO R\$ 478,469,917.2  95.8%*

BEANS R\$ 1,181,013,065.91  86.2%*

PEANUTS R\$ 547,614.19  61.6%*

WHEAT R\$ 67,929,821.21  37.0%*

CORN R\$ 6,065,087,244.45  30.0%*

BANANA R\$ 237,252,397.46  14.1%*

ARABIC COFFEE R\$ 144,006,558.91  2.3%*


*compared to 2018

Source: Ministry of Agriculture, Livestock and Supply.
Accessed on January 15, 2020.

4th GRAIN CROP SURVEY 2019/2020

ESTIMATE

GOIÁS **24,577.3** thousand tons of grain

Planted area: **5,760.9** thousand ha  of **1.7%***

4th largest grain producer in Brazil

9.9% of the national production

SOYBEAN



Production: **12,053.3** thousand tons

 **5.4%***

49.0% of grain production

CORN



Production: **10,884.9** thousand tons

3rd largest producer in Brazil

11.0% of the national production

CORN - 1st CROP

Production: **2,312.6** thousand tons

 **15.4%***

21.2% of the corn crop in the state

BEANS



Production: **319.9** thousand tons

 **5.1%***

BEANS - 1st CROP

 **19.8%***

*compared to 2018/2019 Crop

Source: CONAB.

Accessed between January 15 and 17

1st SURVEY OF 2020 COFFEE CROP

ESTIMATE

GOIÁS

ARABIC COFFEE



2020 Positive Biennial

276 thousand bags

■ Production: **↑ 10.7%***

1st POSITION

IN PRODUCTIVITY

IN THE COUNTRY

43.5 bags/ha

↑ 21.0%*

BRAZIL PRODUCTIVITY:

■ Brazil Production: **45,976.9** thousand bags

30.4

bags/ha

*compared to 2019 Crop

Source: CONAB.

Accessed between January 15 and 17



INTERNATIONAL MARKET

GOIÁS

DECEMBER 2019

TRADE BALANCE (ALL PRODUCTS):

US\$ 319,777,176.00

Total Exports: **US\$ 574,627,978.00**

Total Imports: **US\$ 254,850,802.00**

Agribusiness
Exports:

US\$ 440,490,105.00

Goiás agribusiness participation accounts for **5.7%** of the national agribusiness exports

**AGRIBUSINESS PARTICIPATION
IN GOIÁS EXPORTS:**

76.7%

Source: Ministry of Economy, Special Secretariat for Foreign Trade and International Affairs, Comex Stat.
Accessed between January 15 and 17, 2020.
Ministry of Agriculture, Livestock and Supply, Agrostat.
Accessed between January 16 and 20, 2020

HIGHLIGHTS IN DECEMBER EXPORTS - 2019



POULTRY:

↑ **21.1%***

US\$ 34,474,204.00



SOYBEAN COMPLEX:

↑ **4.4%***

US\$ 140,948,456.00



SUGAR:

↑ **3.0%***

US\$ 25,223,019.00

* Comparisons in relation to November, expressed in American dollar (US\$) in FOB prices

Source: Ministry of Economy, Special Secretariat for Foreign Trade and International Affairs, Comex Stat. Accessed between January 15 and 17, 2020.
Ministry of Agriculture, Livestock and Supply, Agrostat. Accessed between January 16 and 20, 2020.

HIGHLIGHTS IN EXPORTS - 2019

MEAT

20.1% of the total exports

US\$ 1,416,763,508.00



BEEF:

254,635,127 kg (59.3% of all exported meat)

US\$ 1,083,534,348.00

MAIN DESTINATION CHINA: **47.1%***



POULTRY:

159,940,397 kg (37.2% of all exported meat)

US\$ 299,048,815.00

MAIN DESTINATION JAPAN: **22.6%***



PORK

6,236,963 kg (1.5% of all exported meat)

US\$ 8,078,625.00

MAIN DESTINATION HONG KONG: **49.7%***

*Participation in quantity expressed in kilograms (kg)

Source: Ministry of Economy, Special Secretariat for Foreign Trade and International Affairs, Comex Stat.
Accessed between January 15 and 17, 2020.
Ministry of Agriculture, Livestock and Supply, Agrostat.
Accessed between January 16 and 20, 2020.

HIGHLIGHTS IN EXPORTS - 2019



DAIRY PRODUCTS

US\$ 888,542.00

515,182 kg

Growth of **68.0%** in relation to the exported volume in 2018

MAIN PRODUCTS:

- Table cream
- Sweetened condensed milk
- Powdered milk
- UHT milk
- Milk butter



SUGAR-ALCOHOL

US\$ 266,024,586.00

Sugar: 677,976,321 kg

Main destinations

- Iraq: 11.1%*
- Algeria: 13.1%*
- Bangladesh: 7.9%*

* Comparisons in relation to November, expressed in American dollar (US\$) in FOB prices

Source: Ministry of Economy, Special Secretariat for Foreign Trade and International Affairs, Comex Stat.

Accessed between January 15 and 17, 2020.

Ministry of Agriculture, Livestock and Supply, Agrostat.

Accessed between January 16 and 20, 2020.

Alcohol: 54,501,680 Kg,

99.9% of which are destined for the USA

HIGHLIGHTS IN EXPORTS - 2019



COFFEE

US\$ 5,638,821.00

- Green coffee accounts for **99.9%** of the volume exported
- **40.8%** destined for Germany



SOYBEAN COMPLEX

US\$ 2,472,371,708.00

- Decline in representativeness in Goiás

46.5% in 2018

35.1% in 2019

- China accounts for **56.3%** of the exported value amounts



CORN

US\$ 808,180,366.00

- Increase in representativeness

3.9% in 2018

11.5% in 2019

Main destinations

- Japan: 20.1%*
- South Korea: 15.8%*
- Taiwan: 13.9%*

Participation as compared to the values of 2019, expressed in American dollar (US\$) in FOB prices

Source: Ministry of Economy, Special Secretariat for Foreign Trade and International Affairs, Comex Stat. Accessed between January 15 and 17, 2020. Ministry of Agriculture, Livestock and Supply, Agrostat. Accessed between January 16 and 20, 2020.

HIGHLIGHTS IN EXPORTS - 2019



FRUITS, WALNUTS AND NUTS

US\$ 6,207,617.00

Growth of **69.9%**, compared to 2018

Main destinations

- Netherlands: 61.9%*
- Canada: 8.9%*
- United States: 8.1%*

Mangos, lemons and limes account for 73.6% of the exported value amounts



COTTON

US\$ 91,394,665.00

Growth of **26.3%**, compared to 2018

Main destinations

- China: 23.4%*
- Turkey : 16.9%*
- Vietnam: 12.2%*

Participation as compared to the values of 2019, expressed in American dollar (US\$) in FOB prices

Source: Ministry of Economy, Special Secretariat for Foreign Trade and International Affairs, Comex Stat.

Accessed between January 15 and 17, 2020.

Ministry of Agriculture, Livestock and Supply, Agrostat.

Accessed between January 16 and 20, 2020.

IMPORTS

GOIÁS 2019

FERTILIZERS

US\$ 660,242,569.00 **2,153,356,341 kg**

Account for **18.4%** of the total imports

Growth of **13.9%** of the imported volume as compared to 2018

Main partner countries:

RUSSIA | CANADA | CHINA

Together they account for **47.4%** of the imported amount of fertilizers

CANADA

59.3% in the exported volume

317,700,180 kg

Highlight: Potassium chloride accounts for 40.2% of imported fertilizer volume

US\$284,999,135.00 **864,883,464 kg**

PESTICIDES

US\$ 9,353,072.00

Decrease of **19.6%**, compared to the imported value in 2018

Fungicides account for **77.6%** of the total value of pesticides

Main partner country:

SPAIN **US\$ 7,258,244.00**

Source: Ministry of Economy, Special Secretariat for Foreign Trade and International Affairs, Comex Stat.

Accessed between January 15 and 17, 2020.

Ministry of Agriculture, Livestock and Supply, Agrostat.

Accessed between January 16 and 20, 2020.



AGENCY FOR AGRICULTURE AND LIVESTOCK DEFENSE IN GOIÁS - AGRODEFESA

2019

VEHICLE INSPECTIONS

42,452 transporting animals or products of animal origin

30,664 transporting plants or products of plant origin

PESTICIDE MONITORING

6,624 at rural properties, trade and transport

LABORATORY SERVICES

1,076 seed analysis

2,006.2 tons of classified grains

8,354 diagnostic tests for animal diseases

6,345 laboratory analysis of animal origin products

ANIMAL HEALTH AND INSPECTIONS OF PRODUCTS

887 monitoring actions of commercial poultry farms

182 control measures of hematophagous bat

14,268 inspection actions on Animal Origin Products



GOIÁS SUPPLY CENTERS S.A. – CEASA

DECEMBER 2019

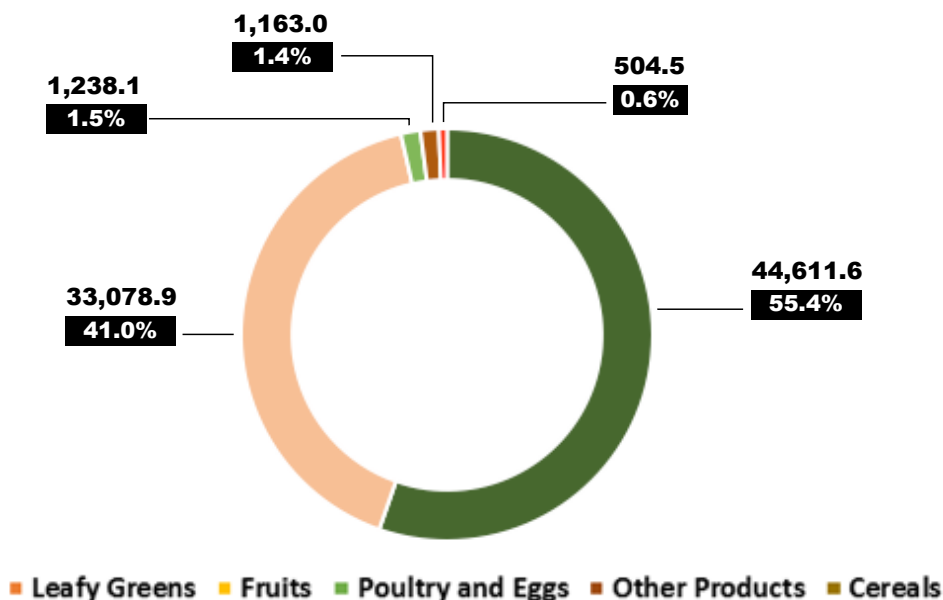
Tons traded

80,596.1

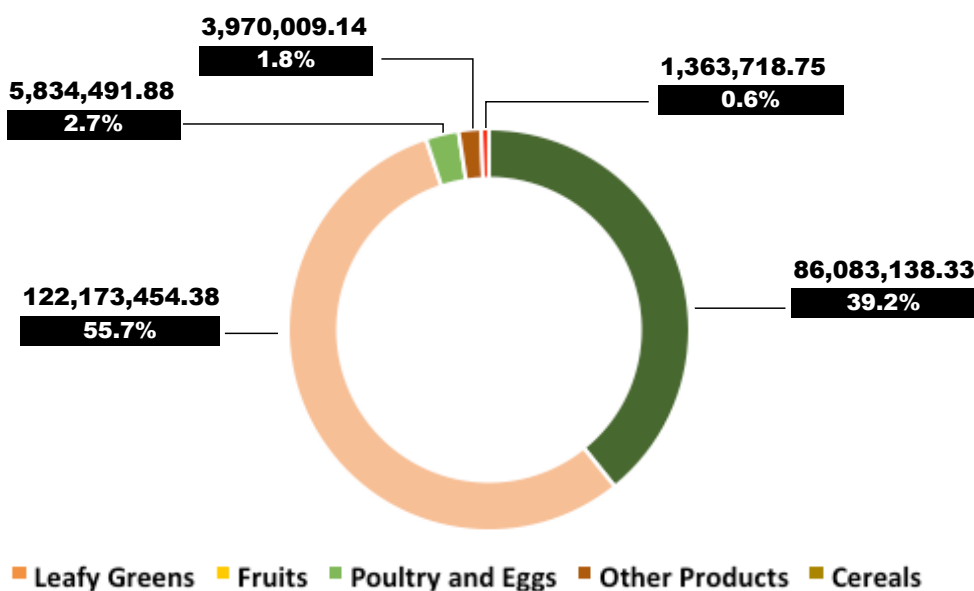
Traded

R\$ 219,424,812.49

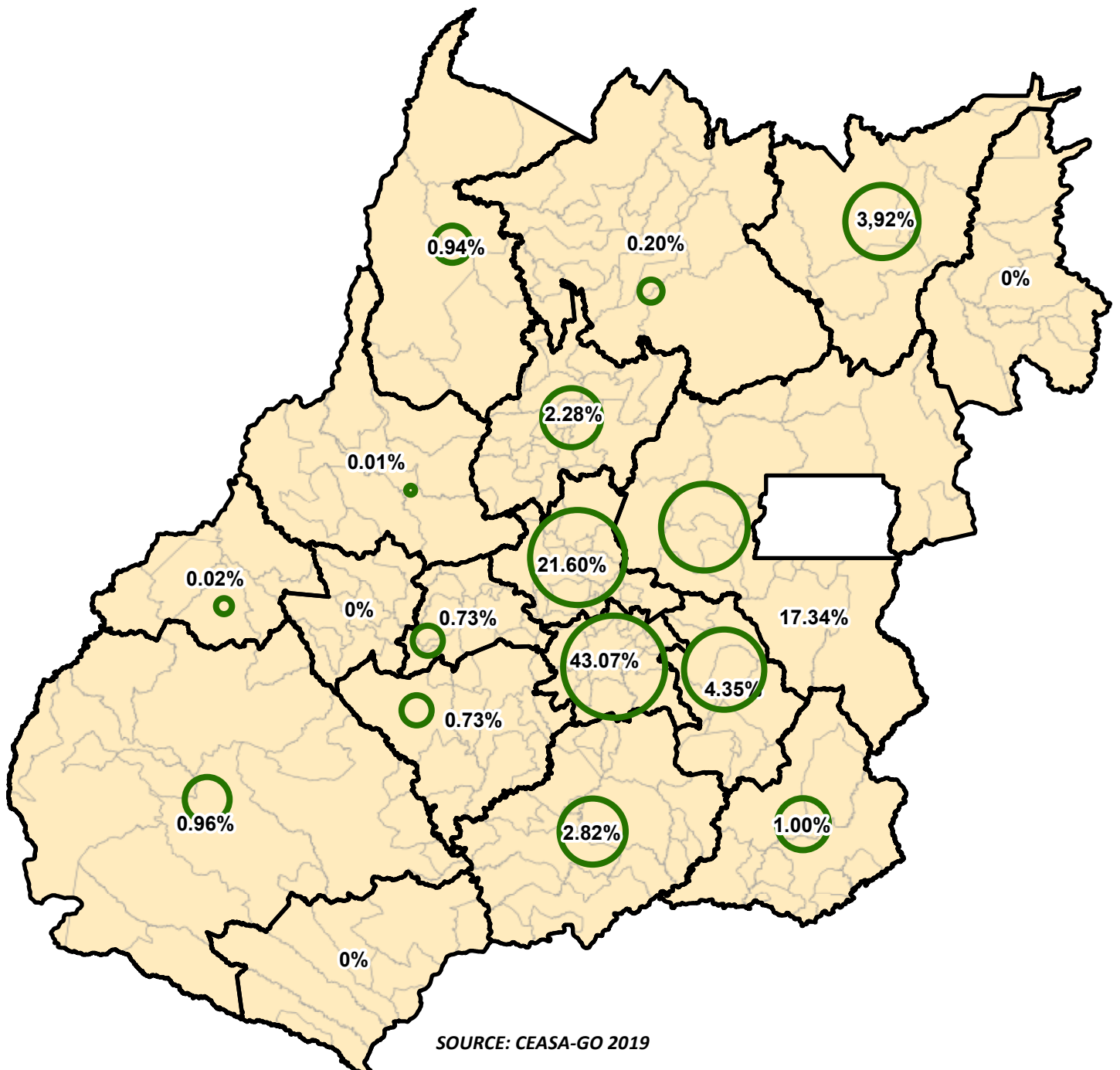
TRADED AMOUNT (TONS)



TRADED VALUES (R\$)



PARTICIPATION IN VOLUME OF THE PRODUCTS TRADED AT CEASA IN DECEMBER 2019



GOIÁS AGENCY FOR TECHNICAL ASSISTANCE, RURAL EXTENSION AND AGRICULTURAL RESEARCH - EMATER GOIÁS

2019

SERVICES:

68,190 assistance services*

15,597 assisted farmers

239 of the **246** municipalities are assisted

* More than 1 assistance service can be performed on each visit

Highlights: **CRISTALINA** 2,268 ASSISTANCE SERVICES

NUMBER OF ASSISTANCE SERVICES IN THE 15 MAIN ACTIVITIES



SEAPA
Secretaria de
Estado de
Agricultura,
Pecuária e
Abastecimento



**AGRO
DEFESA**
Agência Goiana de Defesa Agropecuária



EMATER
AGÊNCIA GOIANA DE ASSISTÊNCIA TÉCNICA,
EXTENSÃO RURAL E PESQUISA AGROPECUÁRIA




Centrais de Abastecimento de Goiás S/A



W W W . A G R I C U L T U R A . G O . G O V . B R

© SEAPAGOIAS

|  SEAPAGOIAS

|  @GOIASSEAPA

|  SECRETARIA DE AGRICULTURA DE GOIÁS